



Exe Press

Newsletter of the EXE Estuary Partnership

ISSUE 22 • AUTUMN 2010



Litter Art Work, made by local school children around the Exe to raise awareness of the damaging impact that litter has on our ocean's wildlife, see our article on page 2 for more information

In this issue:

***Managing the Estuary's
Flood Defences - Public Exhibition***

New Canoe Loops to Exe-plore

Share the Smile

Exe-travaganza an Exe-citing Success



Dawlish Warren was home to the Spirit of the Exe Exe-travaganza on Saturday 10th July 2010. The free event was a resounding success with several thousand locals and holiday makers visiting the numerous stalls, workshops and activities throughout the day.

Mrs Underwood from Dawlish enthused, "the stalls were so diverse that it was really interesting to look around and find out more about all of the different aspects of the estuary."

Creative workshops, using recycled materials, offered visitors the opportunity to create kites, puppets and masks while Mad Science demonstrated the impact of oil pollution on the sea through interactive experiments. Neptune and the Ocean Goddess thrilled

the younger crowds with their elaborate costumes and stilt walking. Face painters, offering marine themed designs, were kept busy throughout the day creating pirates, crabs and much more.

Jenny Lockett, Exe Estuary Officer and event organiser said, "The event was a fantastic opportunity for people to learn more about the globally important Exe estuary in a fun and interactive environment."

The event was sponsored by Dawlish Warren Tourism Group, the Crown Estate and the Partnership. It also received substantial support from Teignbridge District Council, the BoatHouse and local community groups in Dawlish.

The event is an annual festival which aims to celebrate and showcase the Exe Estuary and all of her clubs, businesses and community groups. The Dawlish Warren event was the second year of the festival with the 2009 event taking place in Exmouth. The Exe Estuary Management Partnership is now considering venue options in Exeter for 2011.

Councillor Bernard Hughes OBE, Chairman of the Partnership, said "We are really pleased to be able to offer local families this chance to celebrate and learn about the estuary each year. The Exe is a central part of people's lives in local communities and it is an honour to be able to celebrate its value with those people as well as visitors to the area."

Jenny Lockett
Exe Estuary Officer
01392 382236 / exeestua@devon.gov.uk / www.exe-estuary.org

Local Schools Lead the Way on Litter Awareness Campaign

As reported in the spring edition of Exepress, the amount of litter in our oceans is increasing at an alarming rate with disastrous impacts for wildlife; an estimated one million birds and 100,000 marine mammals and sea turtles die each year as a result of entanglement in plastics or plastic ingestion.

Over the past few months the Exe Estuary Partnership and Dawlish TRAIL have been working with 7 local schools in Dawlish, Cockwood, Starcross, Kenton, Kenn and Topsham to help students learn about the dangers of marine litter. Each class then put their new found knowledge to good use by creating large marine litter displays that communicate the damaging impacts that litter has on our marine environment. These 3.5m by 2m pieces of art were displayed at the Exe-travaganza on 10th July and then spent the following month outside the Manor House, in Dawlish as part of the annual Recycled Art in Landscape Sculpture Trail in Shaldon, Teignmouth and Dawlish.

Exe Estuary Officer, Jenny Lockett, provided the environmental information to the schools while Carolyn Ballard, Dawlish TRAIL project coordinator, and Environmental Artist Lauren Ballard provided the artistic guidance. Materials were provided to the schools

including marine litter collected from the estuary during volunteer events organised by the Partnership and Dawlish Warren Rangers. The base for each display is a recycled fence panel, as seen on building sites, which were each checked for safety and the litter was cleaned before they were provided to the schools.

Carolyn Ballard said, "The displays had to be seen to be fully appreciated as they are really quite remarkable combining 3D sculptures with colour and imaginative use of recycled materials to create an impressive piece of art."

"This has been a fantastic project and we would like to thank partnership Schools and their young artists for their hard work in designing and making the sculpture for the Exe- Extravaganza Festival and Dawlish TRAIL."

For pictures of all the panels please visit www.exe-estuary.org

Jenny Lockett
Exe Estuary Officer
01392 3822356 / exeestua@devon.gov.uk

Exe Clean Ups Help to Tackle Damaging Effects of Ghost Fishing

Ghost fishing occurs when fishing gear, such as nets, traps and pots, are lost or intentionally abandoned at sea. This lost gear continues to 'fish' long after it has been discarded causing marine animals to become entangled and needlessly die. The death toll of nets is perpetuated when predatory species, such as dolphins looking for an easy meal, are attracted to the net to feed on the entangled fish and subsequently become entangled themselves.

The consequences of baited pots or traps, that are used for catching crabs and lobsters, are similar. The pots, which are moored on the seabed with a line and float to mark their position on the surface, are easily lost if the line is broken by passing craft or stormy conditions. Fish and crustaceans lured inside the baited pot are trapped and subsequently die. Their bodies, baiting the pot once again, attract other fish and crustaceans to their deaths.

Ghost fishing is a regrettable consequence of fishing that when combined with the impacts of litter, over fishing and climate change spell disaster for our marine environment.

At the Exe Estuary Management Partnership we aim to take practical action to protect the wildlife of the estuary. Our 6 monthly clean up events, which are dependent on conscientious local volunteers, collect a high quantity of litter from the Exe including crab pots and fishing nets which may otherwise be left to continue 'ghost fishing'.

Exe Estuary Autumn Clean ups

As part of the Marine Conservation Society's National Beach Watch weekend in September clean up events will be taking place at both the Exmouth Local Nature Reserve and Dawlish Warren National Nature Reserve.

Exmouth LNR

We will be celebrating National Beach Watch a week late at the Exmouth site in order to allow for a better low tide window. The event will take place on Saturday 25th September 2010 between 1.30pm and 3.30pm (please note this is a change to the previously advertised date). Volunteers are invited to take part in giving the estuary a much needed clean up. We will be meeting on the Imperial Recreation Ground in Exmouth and heading out on to the sandbanks of the Local Nature Reserve.

We look forward to welcoming back some of our regular volunteers, as well as many new volunteers who would like to give it a try. Families are welcome as are well behaved dogs. Gloves and

equipment are provided but please wear wellie boots, waterproofs and bring sun cream (just in case!).

If you would like to attend please book a place (so that we can provide adequate equipment and refreshments)

Tel: 01392 382236
Email: exeestua@devon.gov.uk

Dawlish Warren NNR

On Sunday 19th September between 10am and 2pm volunteers are invited to join Dawlish Warren Rangers in cleaning up the sand dunes and beaches of the Warren.

Families are welcome but please leave dogs at home. Gloves and equipment are provided but please wear sensible footwear, waterproofs and sun cream.

To book your place please contact the Rangers at:

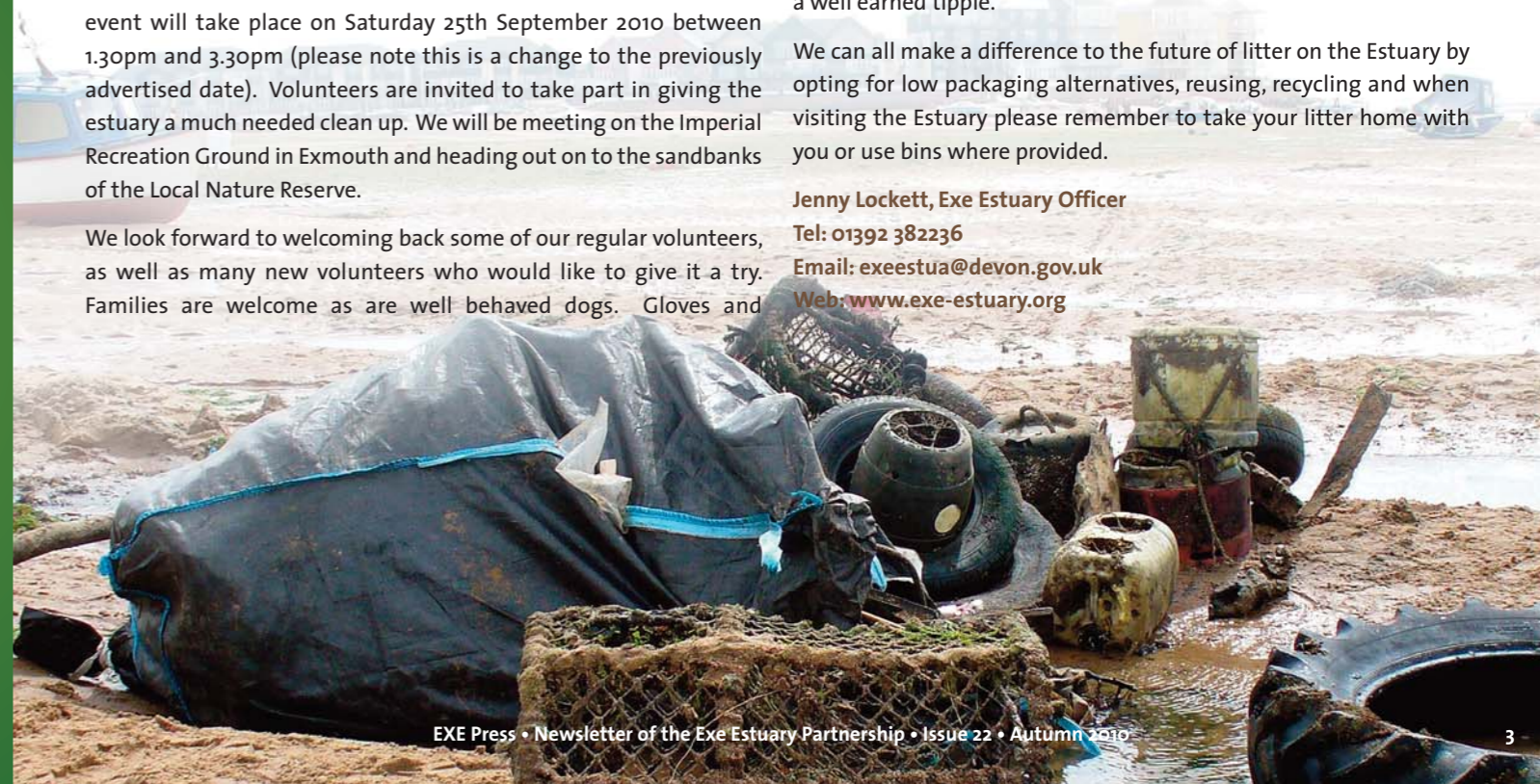
Tel: 01626 863980
Email: Phil.chambers@teignbridge.gov.uk

Free Cruise

As a celebration of all our hard work, all of the volunteers are invited to attend a free cruise, courtesy of Stuart Line Cruises, on Saturday 25th September from 4pm till approximately 5pm. There will be a light buffet available on board and the bar open to treat yourself to a well earned tippie.

We can all make a difference to the future of litter on the Estuary by opting for low packaging alternatives, reusing, recycling and when visiting the Estuary please remember to take your litter home with you or use bins where provided.

Jenny Lockett, Exe Estuary Officer
Tel: 01392 382236
Email: exeestua@devon.gov.uk
Web: www.exe-estuary.org



Who is the Exe Estuary Management Partnership?

For those of you who are regularly in contact with the Management Partnership this may seem like an easy question but please read on, along with those who are scratching their heads in wonder, as there have been some changes over the past couple of years which you may not be aware of.

Background

The Exe Estuary Management Partnership (EEMP) was founded in the early nineties to bring together the organisations that have a duty to protect and manage the estuary. This 'duty' to manage the estuary, and where possible enhance it, is due to the global importance of the estuary as a wetland for winter migrants such as Avocet, Brent Geese and Godwits. The estuary is protected by European law as a Special Protection Area and Site of Special Scientific Interest and under International designations as a Ramsar site.

But why a Partnership?

Due to the geographical makeup of the estuary, as well as the varied interest groups, it would be costly and ineffective for individual organisations to manage the site independently of each other (not to mention confusing). It makes a lot more sense to deliver joint, coherent management of the site, hence the Management Partnership which delivers a joint Management Plan through joined up working and equal direction of an Estuary Officer.

Who are these organisations?

Devon County Council	East Devon District Council
Teignbridge District Council	Exmouth Town Council
Dawlish Town Council	Starcross Parish Council
Natural England	RSPB
Environment Agency	

How does it work?

The EEMP is formed by 3 fundamental groups; **the Forum**, **the Management Partnership** and **the Officers Working Group**.

- The Forum is central to the Partnership and includes the most important people – you!
- It is the people that live, work, play on the Exe and know and love her best.
- The Forum meets twice a year; once in January for a formal event to discuss Exe related issues and in the summer for a celebration of the Exe called Exe-travaganza. Both events are open to everybody to attend.
- It is chaired by 2 local residents that were elected by the Forum members
- It is your chance to have your say about key issues!

- The Management Group is formed by a representative of each of the contributing partners. For the Local Authorities they are your local Councillors and are there to represent the views and needs of your area and your community (you).
- It is also attended by the Forum Chairs who represent the Forum (that's you again!)
- It meets twice a year to approve the Estuary Officer's work plan, annual reviews and publications and discuss key issues on the estuary.

- The Officers Working Group are technical Officers from each of the 7 partners. They represent their organisation and provide frequent support for the Estuary Officer.
- The OWG meets twice a year to agree the Estuary Officer's work plan, review achievements and provide technical guidance as well as discuss estuary issues that may impact each other's organisation

What does it deliver?

Fundamentally the EEMP delivers the Management Plan for the estuary through proactive actions, such as clean up events, education, public awareness and interpretation. But it also has to be reactive to current issues, on a National and local scale, and conflicts of interest where they arise. It acts as a peace broker for local issues, it addresses concerns and keeps people informed. For more detail please have a look at last year's achievements on the following article.

What is the Management Plan?

Informed by a large scale review of the Exe, called 'The State of the Exe', the Management Plan went through an intensive consultation period with local people in 2005. The Management Plan covers all of the objectives for the site including those necessary to fulfil the requirements of the European designations.

What does the Estuary Officer do?

The Estuary Officer, Jenny Lockett, distils the Management Plan into yearly Action Plans, that provide a detailed account of the objectives for each year, and uses these to deliver an agreed programme of events and activities. Some actions are delivered annually, such as education and clean up events, while others are less frequent, such as crab tile studies.

There is only one EO operating with a limited budget so actions must be focused on achievable targets with enough flexibility to respond to enquiries, issues and concerns as they arise.

What can the Partnership do for you?

We can't resolve every issue on the Exe but we are doing our best to work with local communities for the best interest of the estuary, her wildlife and her communities. We can and will do what is needed to help more people learn about this fantastic site through raising awareness and support, delivering events, workshops, educational sessions and presentations.

What does the Partnership not do?

- We are not responsible for navigation in the estuary; this duty resides with the Harbour Authority which is Exeter City Council.
- We do not handle planning applications around the Exe, although we will respond to consultations where relevant.
- We are not a regulator and do not have duties to enforce bylaws on the estuary.

How do I find out more?

Visit our website at www.exe-estuary.org
Contact the Estuary Officer: Jenny Lockett
Tel: 01392 382236
Email: exeestua@devon.gov.uk

Exe Estuary Management Partnership Celebrates another Successful Year

The Partnership has produced its 2009/10 Annual Review detailing their progress throughout the last financial year. The report covers the projects delivered as well as a break down of how the Estuary Officers time and budget was spent.

Achievements include:

Community Engagement:

- The first ever Exe Estuary Festival in Exmouth in August 2009
- An Art competition to encourage the artistic communication of the value of the estuary to local communities

Education:

20 Educational sessions delivered to more than 500 students from local schools

Community Events:

- 6 presentations about the Exe to local community groups
- 20+ Local Community Meetings
- 3 Exhibitions at Public Events

Research and Monitoring:

90 page inventory of all the research and survey work ever completed on the Exe



Volunteer Events:

2 volunteer clean up events removing tonnes of litter from the estuary

Public Awareness:

- Quarterly editions of Exepress Newsletters
- New 'sightings' feature on the Exe Estuary website
- 9,437 visits to the Exe Estuary website
- New Exe Explorer leaflet and updated Exe Activities

And lots more, you can read the full report along with the 2010/11 Action Plan at www.exe-estuary.org.uk

Jenny Lockett

Exe Estuary Officer

01392 382236 / exeestua@devon.gov.uk

Printing the Exe

Topsham residents recently spent a day "messing about on the river" under the guidance of printmaker artist, Simon Ripley. Simon, from Exeter's Double Elephant Print Workshop, led a day-long session for local people to create fine art prints inspired by the history, beauty and inhabitants of the River Exe.

Using Topsham Museum's collection of images and artefacts as a starting point, the seventeen-strong group of all ages used images of the water, boats, tools, imports and exports and the natural environment, such as shells, birds, and grasses for their inspiration.

The resulting works explored colour, composition, pattern and texture through printmaking, using techniques such as collograph, drypoint and monoprinting. The artwork created by the group will be exhibited at Topsham Museum during the month of October.

Double Elephant Print Workshop is based at Exeter's Phoenix Arts Centre and offers courses, tuition and resources for beginners through to professional artists. It also operates an extensive outreach programme, taking printmaking activities to schools, family centres, hospitals and other community venues.



Double Elephant

Tel: 07855 206659

Website: www.doubleelephant.org.uk

Topsham Museum

25 The Strand, Topsham, Exeter, EX30AX

Tel: 01392 873244

Website: www.devonmuseums.net/topsham

Managing the Estuary's Flood Defences into the Future

Since the spring, the Environment Agency has been working in partnership with the local authorities of Teignbridge, East Devon, Exeter City and Devon County on the Exe Estuary Strategy. It follows on from the recent broad scale South Devon and Dorset Shoreline Management Plan. When complete, it will provide more detail on flood defence options in the estuary including Dawlish Warren, Exmouth, the Lower Clyst and Powderham banks.

As part of this, we have developed predictions of flood and coastal erosion risk over the next century. We are holding a public exhibition to explain how the strategy will develop and to describe the flood risk around the estuary now and in the future. We would like to receive your feedback and improve our understanding of your concerns. The planned exhibition will be held on **Thursday 23rd September from 3 to 8:00pm** in the Conference Room at The Coaver Club, Devon County Council, Topsham Road, Exeter EX2 4QD

You may drop in for as long or as little as you would like to view the exhibition and talk to knowledgeable staff from the Environment

Agency and consultants from Halcrow and Atkins. If between the hours of 3.00pm and 4pm please use the pay and display visitor car park at County Hall and report to the main reception for directions to the Coaver Club. If after 4pm you may enter the main car parking area where parking will be free, car park F is the closest to the Coaver Club on the County Hall campus. For further details about visiting County Hall, including public transport options, please visit: http://www.devon.gov.uk/county_hall.htm

Until then, if you have any questions please see

<http://www.environment-agency.gov.uk/homeandleisure/floods/31736.aspx>

or contact

Steve Rendell
Environment Agency

01392 442021
Steve.Rendell@environment-agency.gov.uk

Although the sun is still shining the reserve is getting ready for the winter visitors!

Well it really feels like summer when the number of grazing animals on the marsh increases and we enter the time for our main grassland management. Hay bales dotted about the fields and short turf makes the grassland look nicely trimmed ready for the increase in water levels and the arrival of our autumn visitors, in the shape of wildfowl and waders. The air seems alive with colour opening up water features and ditch edges increases feeding opportunities for dragonflies and damselflies, and the butterflies are enjoying what seems to be a bumper year for bramble. Grassland management has been the focus of the summer, supported by Natural England we concentrate on trying to knock back the large rush tussocks that flourish on the wet and marshy ground. With our newly acquired weed wiper we have started a programme of works to treat the tussocks before then cutting and removing them. In places the material is extremely thick and so far over 27 hectares we have harvested 327 large hay bales, predominately of rush.

This work really helps to get the grassland in to good shape not only for our breeding waders but for our winter visitors too. This time of year is a quiet time for birds, but come October the marshes will start to come alive with wintering waders and wildfowl. A walk down Station Road will bring sights and sounds of wintering ducks like teal and wigeon especially and at high tide there is a good chance that there will see more unusual birds such as black-tailed godwits.

The high tide roost at Bowling Green Marsh is well worth a visit and if you are a little apprehensive about identifying one species from the other in the mass of birds that congregate, why not come on one of our walks where there will be staff and volunteers to help you.

31st October and 21st November –
Exminster Marshes – 10am to 1pm
Return of the Winter Waders and Wildfowl

12th December –
Bowling Green Marshes – 9am to 12 noon
A Spectacle of Winter Waders and Wildfowl

9th January 2011 –
Exminster Marshes – 10am to 1pm
New Year Winter Wildlife

27th February 2011 –
Bowling Green Marshes – 1 to 4pm
A Spectacle of Winter Waders and Wildfowl

Avocet Cruises on the Exe Estuary

The RSPB also offer excellent River Exe Avocet cruises throughout the winter, starting in November and ending in March, just as the birds head off for their summer holidays!

Cruises offer the opportunity to get up close to all manner of wintering waterbirds, including godwits, brent geese and of course the elegant and graceful avocet.

Full cruise Dates 2010 (Adults £14, children £6):
Saturday 6th November, depart Starcross, at 12.30
Sunday 21st November, depart Starcross, at 11.30am
Tuesday 23rd November, depart 13.30, from Exmouth

Mini Cruise Dates for 2010 (Adults £10, children £4):
Sunday 7th November at 13.00, depart Topsham, Trout's Boatyard
Saturday 4th December at 11.00, depart Topsham, Trout's Boatyard

For further dates in 2011 please visit
<http://www.rspb.org.uk/datewithnature/sites/avocet>

To book your guided walk or cruise please contact:
RSPB
Tel: 01392 432691
Email:
Web: <http://www.rspb.org.uk/datewithnature/sites/avocet>

Guided Wildlife Cruises from Stuart Line Cruises

Wildlife spotting opportunities on the Exe Estuary are also provided by Stuart Line Cruises with various dates available for guided bird watching from November till mid March. The Exmouth based cruise company offer year round scenic cruises, summer coastal cruises and day trips to local towns.

Cruise Dates 2010, Departing from Exmouth Marina (Adults £10, children £5):
Saturday 6th November 12.30
Sunday 7th November 1.15pm
Saturday 20th November 11.30am
Saturday 4th December 11.15am

Stuart Line Cruises
Tel: 01395 279693
Email: info@stuartlinecruises.co.uk
Web: www.stuartlinecruises.co.uk



Swimmers conquer the Exe to raise money for local charity

The annual Topsham-to-Turf swim has become part of the traditional summer on the Exe and this year proved no exception when a record 78 swimmers took to the water to raise money for the Estuary League of Friends.

Started by Topsham ferryman Mike Stevens, whose original swim across the Exe inspired this event, the swimmers raised over £5000 – a 20% increase on the amount raised in 2009. The funds go towards a disability-friendly vehicle the charity will use for clients in Exeter, Exmouth and across East Devon.

The currents were favourable for the swimmers this year allowing the fastest to reach the finishing point at the Turf in just 26 minutes. The final swimmer closed the race after 100 minutes. In addition to the swimmers there were kayaks, ribs and boats accompanying them, along with the official photographer from Lymptone marine camp.

As well as the swimmers, the success of the event is thanks to the scores of volunteers who helped – including many from Topsham Sailing Club, Strutt & Parker, and Estuary League of Friends – doing everything from swimmers' registration, making hot drinks, support boats and collecting donations.

The event, sponsored this year by the local offices of Landmark Information Services and Strutt & Parker, is part of a weekend of events on the river, including waterside music sessions and a tug of war across the estuary – a real community event, helping one of the area's most active charities.

For information about next year's swim please visit www.estuary-league-friends.co.uk or email rachel.estuary@virgin.net





New Canoe Loops to Exe-plore

The Canoe Loops are a series of self-guided circular canoeing/kayaking trails that link the River Exe and Exeter Ship Canal between Exeter Quayside and the Exe Estuary.

A new leaflet is being produced to promote the trails and new access steps have been installed to improve canoe ingress, egress and portage around weirs. The waterproof leaflet will detail routes, access point locations, safety advice and a code of conduct.

There are four loops which can be paddled from different access points and in different combinations. Canoeists can head down the river and back up the canal and join up loops for longer trips. It takes most people 2-3 hours to paddle each loop and the complete circuit from Exeter Quay to Turf Locks and back is 17km, which can take a full day.

Exeter Canoe Loops is a partnership project between the Environment Agency and Exeter City Council.

You can download a copy of the leaflet from the Exe Estuary website

http://www.exe-estuary.org/index/leaflets_and_maps.html

Nick Whatley
Tel: 01392 316034
Web: nick.whatley@environment-agency.gov.uk



Share the Smile

Blue Gym, a new initiative which aims to promote the benefits of regular interaction with the water environment, is inviting you to 'Share the Smile' by taking action to inspire others to make the most of the water.

Whether sailing, canoeing, kite surfing, wildlife watching or any other water based leisure pursuit; regular enjoyment of water based activities helps people to

- Reduce stress levels
- Increase physical activity, making you fitter and healthier
- Strengthen communities
- Links and binds us to the natural environment

The Blue Gym is a not for profit partnership of the Peninsula Medical School, Environment Agency, Natural England and Department of Health. It is a web based networking site linking you with like minded water sport enthusiasts to share favourite sites, hints, queries and much more.

Map your Blue Gym places and events

Blue Gym has started building a UK one stop shop window for anyone wanting to know where they can go to in the UK to enjoy the Blue Gym, local events, clubs, launch points and other information to help anyone take advantage of our wonderful blue inland and coastal resources. So join www.thebluegym.org.uk to help us map your special places and local events. There are other things you can do there too; such as set up your own groups to just share information amongst friends & clubs.

Take action to inspire others about what our watery places have to offer!

Regular water sport enthusiasts are well aware of the enjoyment and benefits that these activities can bring for both physical and mental wellbeing. But for many communities there are barriers to this participation; such as a lack of awareness of the clubs and support that is available locally.

If you already do something great around water why not help others by 'sharing the smile' and share what you find great about being around the water with your local community. If they're inspired to enjoy the water environment more often, then we've achieved our main aim and they are sure to be grateful of your encouragement and support once they feel the physical and mental benefits of their experiences.

If you or they would like to do even more to support others to get involved then you can donate to local programmes, such as Exeter Street Paddler, through the Blue Gym Partnership. These programmes spread the benefits and provide life changing experiences to groups and individuals who may not have a friend like you to open the door for them.

So share the smile and help others to enjoy the fantastic estuaries, seas, rivers and lakes available in the South West by visiting www.thebluegym.org.uk and join the movement now to help us become a healthier, happier nation!

Exe Wake is in full swing

Exe Wake has launched a new electronic newsletter to keep local water sport fans up to date with developments in the Exe Wake world with the latest offers, competitions and news. Exe Wake, based in Exmouth, are one of Devon's leading watersports companies offering a variety of watersport experiences including wake boarding, water skiing and banana boat rides. To find out more and register your email address to receive the newsletter contact:

Exe Wake Watersports
Tel: 07825 539 450
Email: info@exewake.com
Web: www.exewake.com

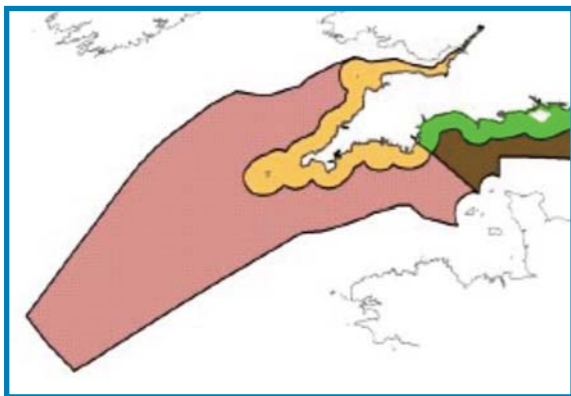




REGIONAL AND NATIONAL MARITIME NEWS

from the Devon Maritime Forum

The Marine Management Organisation will be announcing which areas will be developed in to the first two full Marine Plans in October this year. This will have tremendous implications for those areas chosen first. There will be large resource and practical issues to address as the marine planning process will rely on stakeholder buy-in from the outset. Local Authorities and other stakeholders will need to appoint appropriate resources to the process in order to make sure that the marine plans are meaningful and have sufficient validity and local support. All concerned will need to have the right mechanisms through which they can engage efficiently with the planning process, and Coastal Partnerships could be the ideal vehicle for this.



This picture shows where the marine plan areas are for the South West. You can view the Recommended Marine Plan Areas document in full at <http://www.defra.gov.uk/corporate/consult/marine-plan/marine-plan-recommended-areas.pdf>

The Devon Maritime Forum currently holds the Chair for the national network of Coastal Partnerships (called the Coastal Partnerships Network!) and we are engaged in negotiating specific roles and remits for Coastal Partnerships in this regard. We know the vital link that partnerships like the Exe Estuary Management Partnership make to local communities and are advocating a strategic application of these networks in order to deliver marine planning. We will keep you informed of progress in due course.



New Web Page Helps Keep Estuary's Communities Informed

The Exe Estuary Management Partnership have dedicated a page of the Exe Estuary website to helping local clubs, businesses, organisations and other interested groups keep up to date with consultations effecting the Exe.

Consultation documents are used by a variety of organisations, on both a local and national scale, to find out what the public think about new policies, processes, reports, management plans and much more. With often limited publicity of these documents it can be tricky to keep track of which ones may affect you and your environment.

The new web page aims to help with this process by listing all of the consultations that are relevant to the Exe and her communities so that you can find them easily and all in one place. We also aim to make any Partnership responses accessible so that you can read our thoughts on each consultation as well.

You can view this web page at: www.exe-estuary.org/index/news/current_consultations.htm

The page will be updated as frequently as possible as new consultations arrive so please check back regularly to see what is going on in the world of policies. If you are aware of any new consultations / policies that we haven't included then please send me a link and I will make sure to add it to the website so that everybody can find it.

Current consultations, available from the website, include:

- The Marine Act Implementation
- Tope (Prohibition of Fishing Order 2008) Review
- An invitation to shape the Nature of England

The Management Partnership is committed to improving our communication tools, such as the website and this newsletter, in order to make them as useful as possible for the estuary's communities and businesses. If you have any comments or would be interested in getting involved in their production on a voluntary basis then please get in touch.

Jenny Lockett
Exe Estuary Officer
Tel: 01392 382236
Email: exeestua@devon.gov.uk
Website: www.exe-estuary.org

New Film Captures the Sparkle of the Warren

Dawlish Warren Tourism Group has commissioned a new film to inspire more visitors to holiday at the lively and diverse resort. The short sequence captures the life and energy of this bustling seaside resort with images of happy visitors enjoying the beach, golf course, National Nature Reserve and entertainment attractions.

The film aims to ensure that Dawlish Warren maintains its reputation as one of South Devon's favourite family holiday destinations. Andrew Bulpin, Secretary of the Tourism Group, said "The sand-dune backed Blue Flag beach make it ideal for families with young children and we really wanted to capture the essence of the Warren so that more people will understand why it is such a popular holiday destination".

"There is varied entertainment for people of all ages with both traditional and modern pubs, bars and restaurants which all help create memorable family holidays that will be treasured for years to come."

The Warren, along with other Towns around the Exe, provides a year-round holiday destination that is essential to the local economy. Visitors have a substantial impact on many businesses around the estuary from hotels and campsites to the wide variety of recreational activities, ferry services, shops, car parking, and restaurants which they visit.

To view the film and for more information about the Warren please visit: www.dawlishwarren.info

Jenny Lockett
Exe Estuary Officer
01392 382236 / exeestua@devon.gov.uk / www.exe-estuary.org

Patience Please for the Long-Term Vision of Exmouth

The development of Exmouth's Town Centre, the Strand, has caused a huge amount of interest in the town from locals and visitors. Whilst the short term upheaval and disruption of the area has been frustrating the town is looking forward to the long term vision of the improvements to:

- Rid the Strand of traffic
- Improve its attractiveness and usefulness for the town
- Help boost the economy through creating a quality space where events can happen and businesses can flourish.

Exmouth Town Clerk John Wokersien said, "It is a real achievement to have brought this scheme to the delivery stage and it will help to improve links between the town centre, the transport interchange and the estuary."

"This is just one part of the Master Plan which is currently being pursued to bring much needed improvements to Exmouth, to remove areas which are detrimental to the built environment of Exmouth and to create a welcome to the town centre and estuary side which has hitherto been missing. To do nothing risks future decline of the town, to act now to plan for a prosperous future has to be the way forward for a well balanced community with a balanced population and a vibrant economy".

To relieve any concerns that are still being experienced by local residents and visitors Devon County Council have produced a flyer with images of the vision for the completed Strand and including information about the development.

Pumpkin Fever at Powderham Country Store!

Over 300 people are growing pumpkins for the first ever Powderham Pumpkin Festival, which takes place from **Saturday 23 October** at the Country Store. BBC Gardeners World presenter Toby Buckland will be judging them and will have quite a job on his hands.

Clare Crawshaw, General Manager said, "There is a real buzz around this competition. We have reports of pumpkins that are already over 50lbs in weight. We know they can grow to at least 400lbs so they have some way to go yet. I think our challenge will be getting weighing scales that can weigh that amount!"

Powderham Castle gardening team are also growing pumpkins for carving, in the former Victorian Kitchen Garden.

"It is great that we are planting produce in the kitchen garden again. The pumpkins are growing so well - they are taking over the Estate! The weather has been perfect so at this rate we should have plenty for everyone to carve come October, Clare Crawshaw."

Everyone is invited to join in the fun and watch the BIG pumpkin weigh-off at 12 noon on 23 October.

Pumpkin Festival runs from 23 to 31 October.

Powderham Castle
Tel: 01626 890243
Website: www.powderham.co.uk



Amy Crawshaw and one of the smaller pumpkins her Dad has grown!

An Exe-ceptional Balancing Act

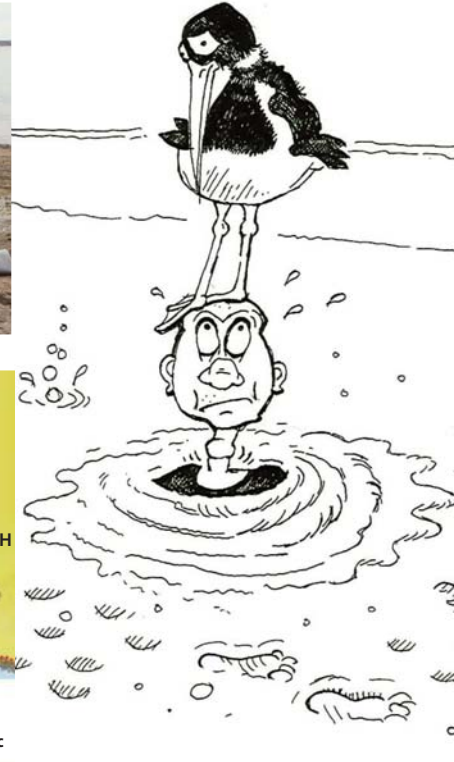
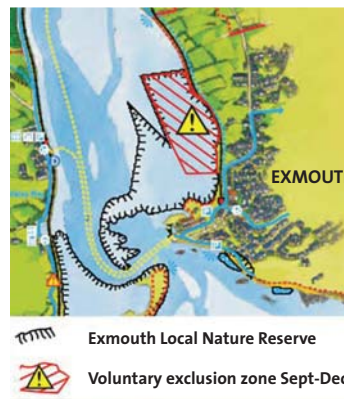
As summer draws to a close and we get our first glimpses of Autumn it is very tempting to put the thought of shorter days and colder, wetter, weather to the back of your mind. However, even now the signs of change are everywhere on the river, with the start of autumn clearly there for all to see.

The increase in numbers of Sandwich terns, complete with screeching young in tow, shows that the breeding season is over and it is time for the journey south again. This is true for many species; Osprey has already been recorded and even 'regular' species like Curlew and Ringed Plover are building towards nationally important numbers.

So now is perhaps a good time to think about the critical balancing act that is needed to ensure that the Exe is all things to everyone. At Dawlish Warren National Nature Reserve this includes the operation of a landing code for boat users, who are requested not to land anywhere on the site after the 4th September each year to prevent disturbance to the bird flocks that rely on the Warren as a feeding and critical roosting area.

Huge numbers of birds can be seen around the Warren Point area of the reserve; some of which stay for the winter, while for others the Exe represents just a pit stop as part of a much longer journey to Africa or beyond. Unnecessary use of energy, such as taking flight in response to a person or craft, while on a journey like that can literally be a matter of life and death.

So while enjoying everything the Exe has to offer, please bear in mind the whole picture and follow these simple guidelines:



1. Do not drive or park on the foreshore

It is a prosecutable offence to damage the estuary in any way including by driving or parking on the foreshore

2. Avoid disturbing wildlife

Enjoy watching wildlife but keep your distance especially from birds gathering at high tide.

3. Prevent Litter

Bin litter or take it home

4. Don't speed

Byelaw 4: Do not exceed the speed limit; 10knots max

5. Keep to the appropriate area for your activity.

Bylaw 5: Skiing only allowed in ski area marked by yellow buoys Avoid key feeding and roosting sites such as the voluntary exclusion zone in Exmouth

6. Prevent Pollution from your boat

Use a ground sheet when undertaking maintenance. Clean up oil spills and don't dump overboard. Do not use you inboard toilet (head) in the estuary.

7. Keep dogs under control

Do not let dogs chase birds and where possible use alternative sites to exercise your pooch during winter, such as local beaches which generally allow dogs from September 30th until May 1st. Parts of Dawlish Warren have a year round dog ban so please check signage carefully.

8. Be Safe

Don't put yourself or others at risk, be aware of the weather and tidal conditions, the use of safety equipment, emergency procedures, soft mud, cliff edges and strong currents.

9. Be Considerate to other estuary users

10. Observe Estuary Bylaws and Warning Signs.